

Technical Specifications

Power supply	10 ... 28VDC
Power consumption	typ. 0.23W, max. 0.3W
Hörmann HCP Interface	Compatible with Hörmann Communication Protocol 1 and 2 (HCP) The device recognizes automatically which garage door operator is connected and which HCP version is used.
Loxone Air	868MHz (SRD Band Europe), 4 channels, max. 15.1mW e.r.p. 915MHz (ISM Band Region 2), 10 channels, max. 13.2mW internal antenna
Ambient Temperature	-20 ... 65°C / -4 ... 149°F
Humidity	max. 95% r.H. (non condensing)
Degree of protection	IP20

HCP Cable

Wire cross-section	0.2mm ² / AWG26
Temperature resistance	80°C / 176°F
Length	100mm / 3.94"
Connector	Modular 6P6C (RJ-12)



For more information
about this product, visit
loxone.com/help/hoermann-air

**Loxone
Electronics GmbH**
Smart Home 1
4154 Kollerschlag
Austria

Loxone UK
The Forum
Station Road
Theale, RG7 4RA
United Kingdom



For additional information,
declaration of conformity, visit
www.loxone.com/datasheets

V160523

Need Help?
loxone.com/support



Hörmann Air

Part No.: 100552

About the Product

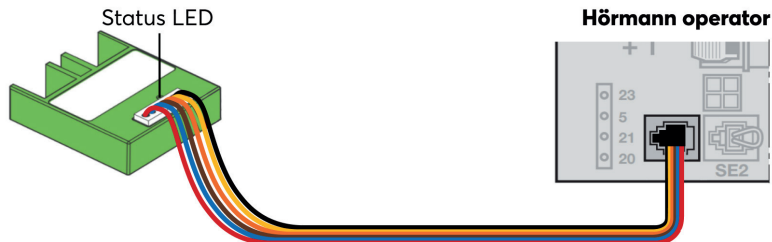
Loxone Hörmann Air is a compact interface module for integrating Hörmann garage door operators.

Compatible Hörmann operators

Operator	Protocol, compatible from Hörmann Softwareindex / Date
SupraMatic E/P 4	HCP2, from B4 / 03-2021
ProMatic 4	HCP2, from B3 / 03-2021
SupraMatic 3	HCP1, from Ci / 07-2013
SupraMatic HT3	HCP1, from B0 / 07-2014
Liftronic 700-2	HCP2, from B0 / 03-2021
Liftronic 800-2	HCP2, from B0 / 03-2021
RollMatic 2	HCP2, from B0 / 04-2022
LineaMatic / P / H	HCP1, from E / 07-2013
LineaMatic 2 / P 2 / H 2	HCP1, from A / 03-2017
RotaMatic	HCP1, from G / 08-2013
RotaMatic 2 / P 2 / PL 2	HCP1, from A / 03-2017
VersaMatic	HCP1, from A / 07-2016
WA 300 R S4	HCP1, from C / 08-2013
WA 300 S4	HCP1, from D / 11-2013
Control 545/560 with WA/ITO 500	HCP2, from B1 / 06-2021
Control 560 with STA 500 FU	HCP2, from B1 / 06-2022

When using operators with HCP2 interface there is a need of activating the BUS-Scan on the operator.

If you use an operator using HCP1 interface, the device is directly in pairing mode.

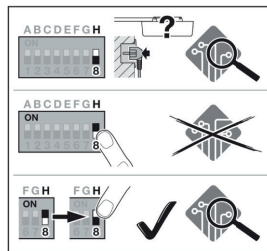


HCP2 operators → Start BUS-Scan

SupraMatic 4:
Menu 37
Parameter 01



ProMatic 4:
BUS-Scan at factory Power-On or set switch 8 to On and Off again.



Liftronic:
BUS-Scan at factory Power-On or set switch 5 to On and Off again.

